

Roberto Palermo
NINNA NANNA

arr. fisarmonica e orchestra / quintetto d'archi di Renzo Ruggieri

A ♩ = 100

Fisarmonica

Violini

Violini

Viola

Violoncelli

Contrabbassi

arco
p

arco
p

arco
p

cresc. arco
p

pizz.
p

9

Fs.

Vi.

Vi.

Vla.

Vcs.

Cb.

17 **B** (solista, interpretazione libera)

Fs. *p*

Vl. pizz. *p*

Vl. pizz. *p*

Vla. pizz. *p*

Vcs. pizz. *p*

Cb.

23

Fs. *mp*

Vl. *mp*

Vl. *mp*

Vla. *mp*

Vcs. *mp*

Cb. *mp*

42

Fs.

mf

3

mf

VI.

mf

VI.

mf

Vla.

mf

Vcs.

mf

Cb.

mf

47

D

Fs.

VI.

mf

VI.

mf

Vla.

mf

Vcs.

mf

Cb.

mf

arco

57

Fs.

VI.

VI.

Vla.

Vcs.

Cb.

62

E (assolo 1)

Fs.

VI.

VI.

Vla.

Vcs.

Cb.

Gm9

pizz.

p

pizz.

p

82

Fs.

VI.

VI.

Vla.

Vcs.

Cb.

87

Fs.

VI.

VI.

Vla.

Vcs.

Cb.

Bbm9

f

f

f

f

f

93

Fs.

VI.

VI.

Vla.

Vcs.

Cb.

97 **G** (*espressivo, liberamente*)

Fs.

VI.

VI.

Vla.

Vcs.

Cb.

p

Gm Gm/F Gm/E \flat Gm/D Cm7 Cm7/B \flat F/A Fm/D Fm

pizz.

mp

116 ^{tr}

Fs.

Vl.

Vl.

Vla.

Vcs.

Cb.

122

Fs.

Vl.

Vl.

Vla.

Vcs.

Cb.

125

Fs.

Vl.

Vl.

Vla.

Vcs.

Cb.

129 **I**

Fs.

Vl.

Vl.

Vla.

Vcs.

Cb.

mf

mf

mf

mf

mf

mf

(tremolo)

137

Fs. *sim.*

VI.

VI.

Vla.

Vcs.

Cb.

142

Fs. *rall.*

VI. *f*

VI. *f*

Vla. *f*

Vcs. *f*

Cb. *f*

Fisarmonica

Roberto Palermo

NINNA NANNA

arr. fisarmonica e orchestra / quintetto d'archi di Renzo Ruggieri

A $\text{♩} = 100$ **B** (solista, interpretazione libera)

C

D **E (assolo 1)** **F (assolo 2)**

22

30

39

49

$Gm9$ $Bbm9$ $Gm9$ $Bbm9$

97 **G** (*espressivo, liberamente*)

p
Gm Gm/F Gm/E \flat Gm/D Cm7 Cm7/B \flat F/A

103 Fm/D Fm G7 \flat 9 Cm7 Cm/B Cm/B \flat F/A B \flat Δ Cm7 Dm7 E \flat Δ

109 **H**

Cm/A D7 E \flat rall.. F/E \flat *f* tempo

115

124 **I**

3 (tremolo) sim.

141 rall.

Violini 1

Roberto Palermo

NINNA NANNA*arr. fisarmonica e orchestra / quintetto d'archi di Renzo Ruggieri*

A
♩ = 100
arco
p

B
pizz.
p *mp*

C
arco
mf

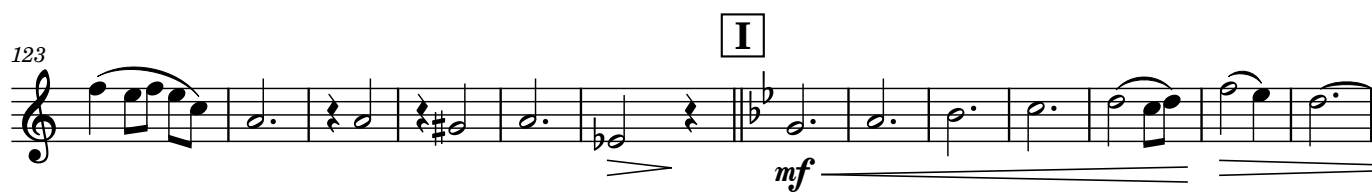
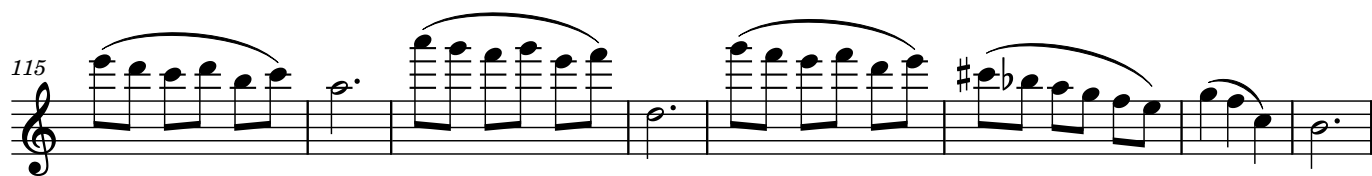
D
mf

E (assolo 1)
p

F (assolo 2)
mf *f*

G
4
pizz.
mp

H
2
arco
rall.. tempo
f



NINNA NANNA

arr. fisarmonica e orchestra / quintetto d'archi di Renzo Ruggieri

A
♩ = 100
arco
p

B
pizz.
p

mp

C
arco
mf

D
mf

E (assolo 1)
p

F (assolo 2)
mf

f

97 **G** 9 pizz. **H** arco

mp *rall..* *f* tempo

117

124

129 **I**

mf

137

f

Viola

Roberto Palermo

NINNA NANNA

arr. fisarmonica e orchestra / quintetto d'archi di Renzo Ruggieri

A
♩ = 100
arco

cresc.

B
pizz.
p

12

24
mp

C
arco
mf

32

40
mf

D

49
mf

E (assolo 1)
p

62

F (assolo 2)
pizz.
mf

75

84

89
f

95

G **15** **H** arco

rall.. *f* tempo

116

124

I

mf

136

f

Violoncelli

Roberto Palermo

NINNA NANNA

arr. fisarmonica e orchestra / quintetto d'archi di Renzo Ruggieri

A
♩ = 100
arco
p

B
12
pizz.
p

C
25
arco
mp *mf*

D
36
mf

E (assolo 1)
47
pizz.
p

F (assolo 2)
57
mp

G
69
pizz.
mf

H
76
mf

I
82

88

88-93: Bass clef, key signature of two flats. Measure 88 starts with a forte (*f*) dynamic. The staff contains eighth-note patterns. A double bar line with repeat dots appears at measure 93.

94

94-114: Bass clef, key signature of two flats. Measure 94 starts with a forte (*f*) dynamic. A box labeled **G** is above measure 100. A box labeled **H** is above measure 105. A measure rest of 15 measures is indicated between measures 105 and 106. Measure 106 starts with a *rall.* marking. Measure 107 starts with a forte (*f*) dynamic and an *arco* marking. The staff contains eighth-note patterns. A double bar line with repeat dots appears at measure 114.

115

115-125: Bass clef, key signature of two flats. Measure 115 starts with a forte (*f*) dynamic. The staff contains eighth-note patterns. A double bar line with repeat dots appears at measure 125.

126

126-136: Bass clef, key signature of two flats. Measure 126 starts with a *mf* dynamic. A box labeled **I** is above measure 126. The staff contains half-note patterns. A double bar line with repeat dots appears at measure 136.

137

137-147: Bass clef, key signature of two flats. Measure 137 starts with a forte (*f*) dynamic. The staff contains half-note patterns. A double bar line with repeat dots appears at measure 147.

Contrabbassi

Roberto Palermo
NINNA NANNA

arr. fisarmonica e orchestra / quintetto d'archi di Renzo Ruggieri

A
♩ = 100
pizz.
p

13 **B**
mp

31 **C**

43 **D**
arco
mf

E (assolo 1)
pizz.
p

54

67


73 *mp*

F (assolo 2)
arco
mf

78

87 **G**
f
15
rall..

113 **H**

113  *f* tempo

127 **I**[illegible]

136

f